

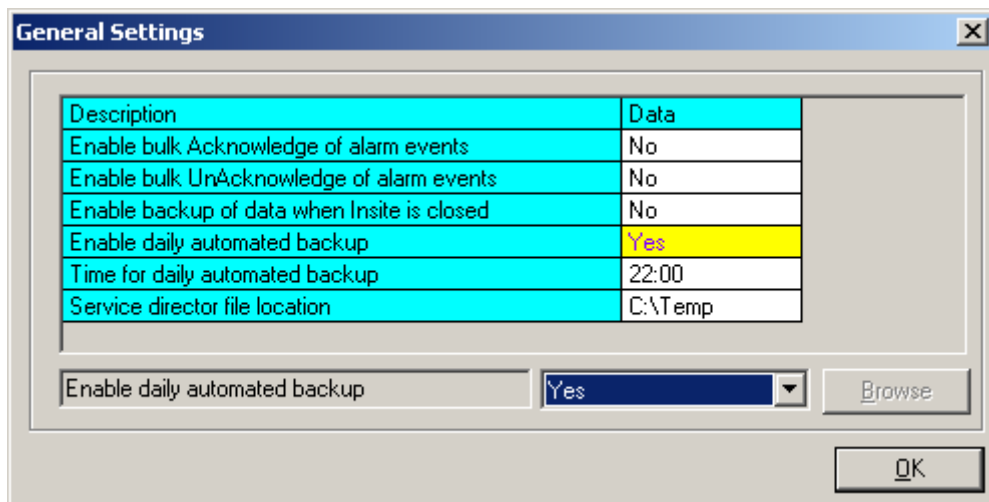


Technical Support Work Note : TSW001-2 { 26/04/2010 }

Maintaining Euro InSite 2009

Keep a back-up of the file udl.mdb. This contains all of your panel data. You can if you wish make back-ups of your diagnostic snapshots; these are stored in the diagnostics folder.

In the general settings menu you can enable an automatic back-up of the udl.mdb file to take place every day at a specified time. Each backed-up file will be time and date stamped as part of the file name.



You can also use the Customer > Export option to save the configuration files of each site as a separate file. These files can be transferred between computers and can be loaded into any version of Euro InSite. The files produced have the file extension .cct.

Recovering Lost Data

Install Euro InSite 2009.

Run the programme once.

Shut down.

Replace the udl.mdb file with the backed-up copy. If your backed-up copy has a different file name, such as udlbk190709.mdb, make sure you rename it to udl.mdb. The backed-up database must be from the same version of InSite as the version you have just re-installed.

Run the programme.

Note: On each release of software, the database version is also upgraded; therefore you need the correct database for the version of InSite you are running. You cannot take the database from the latest version and use it with an earlier version of InSite 2009. Alternatively, you can import the Customer data from the .cct files that had been exported at an earlier date.