
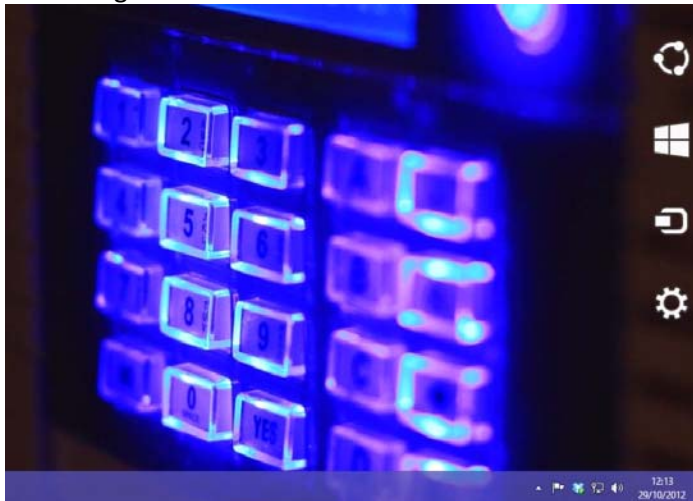


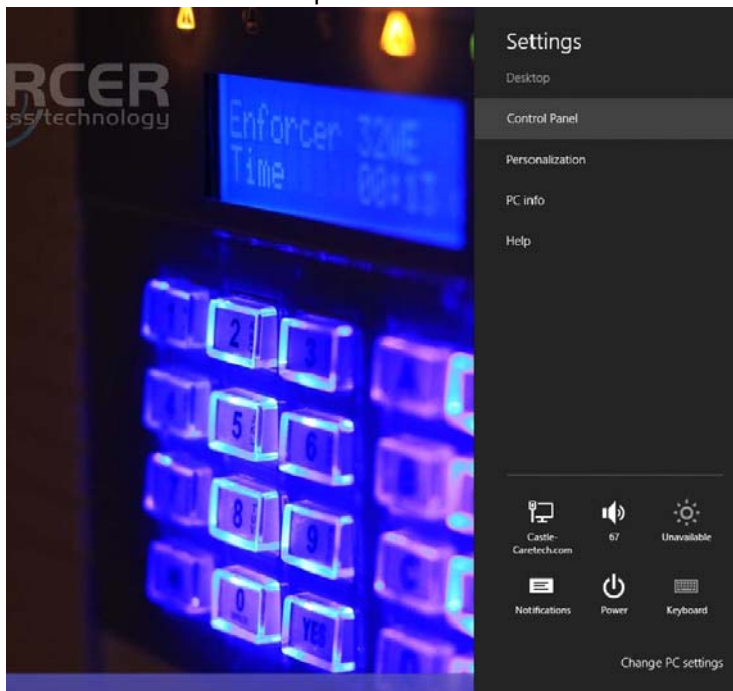
Technical Support Work Note : TSW003-2 { 20/01/2013 } A Pictorial Look at Accessing Windows Device Manager

Windows 8

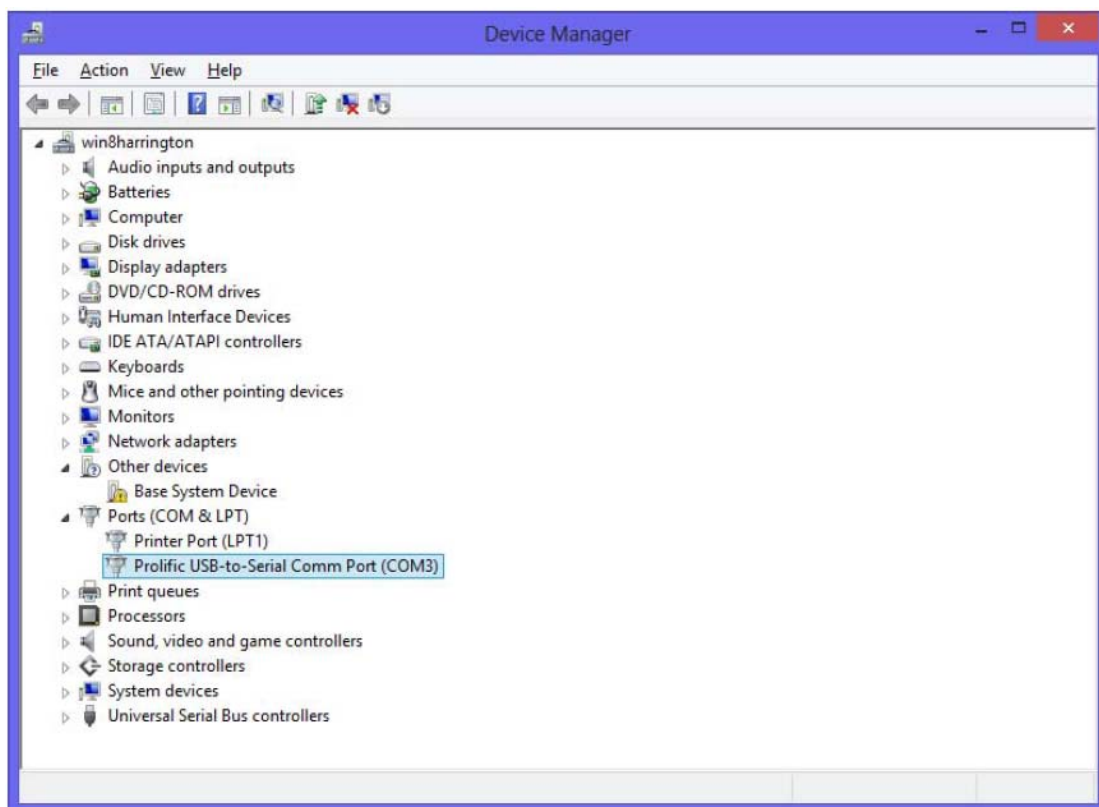
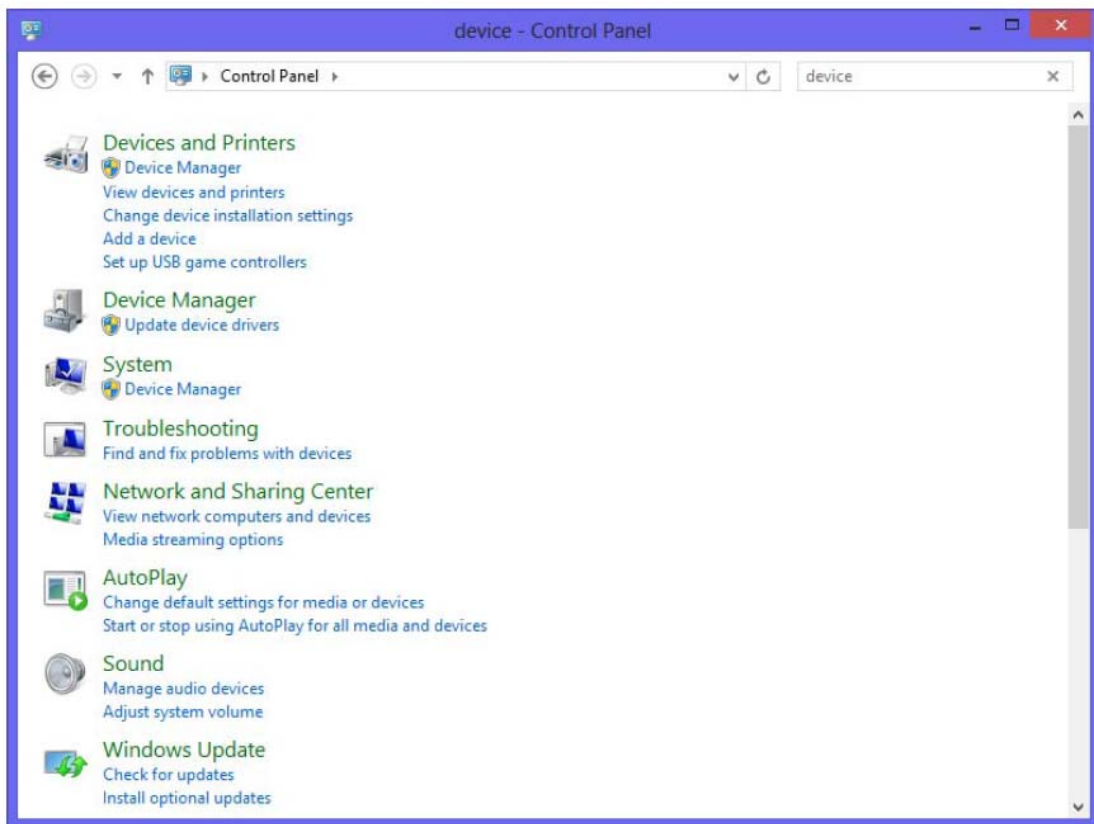
With the operating system in “desktop mode” (Press  Win + D to show the Desktop), move the cursor to the bottom left corner so that the charms appear as below and click on the cog for settings.



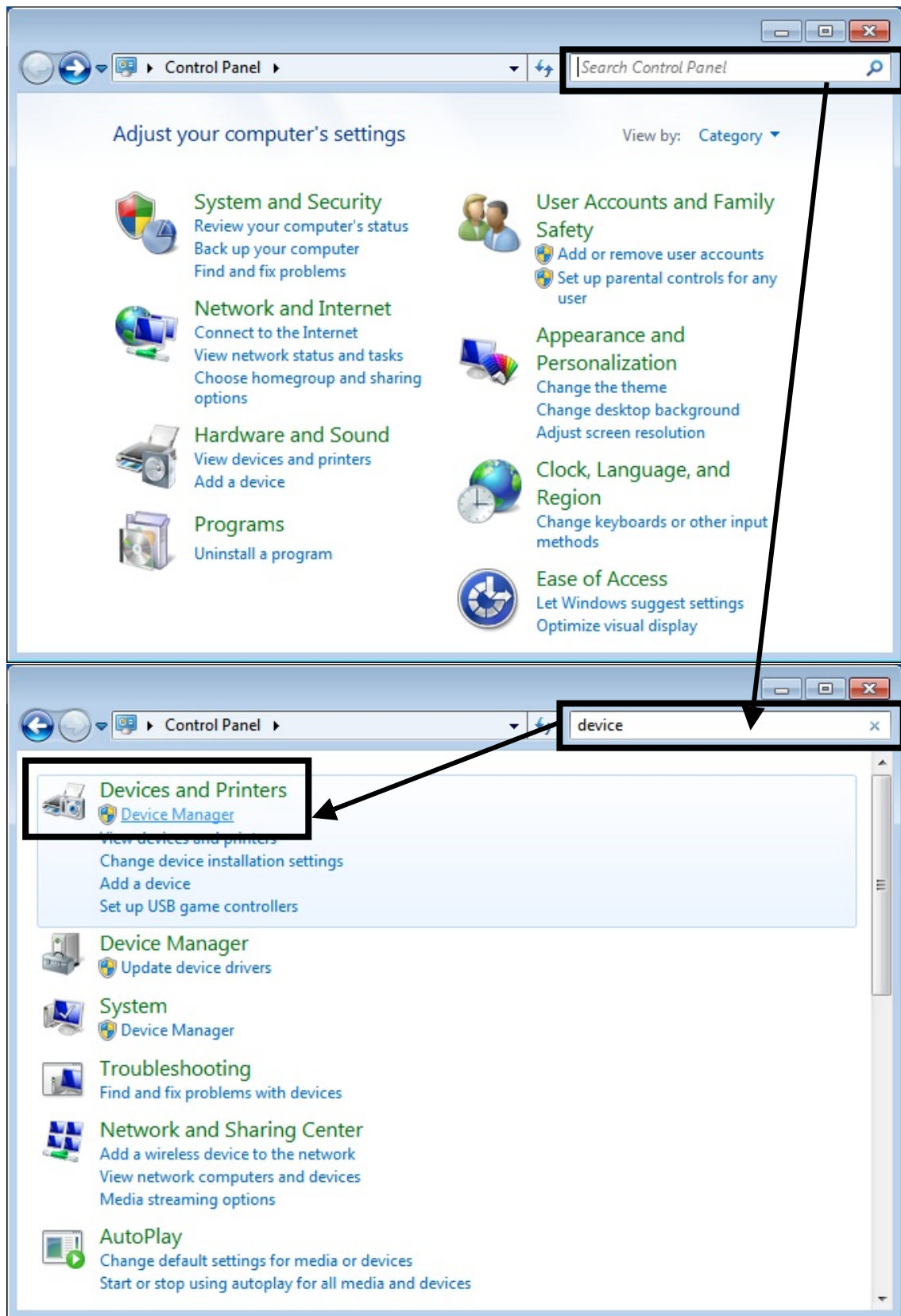
And then click on Control panel as below:

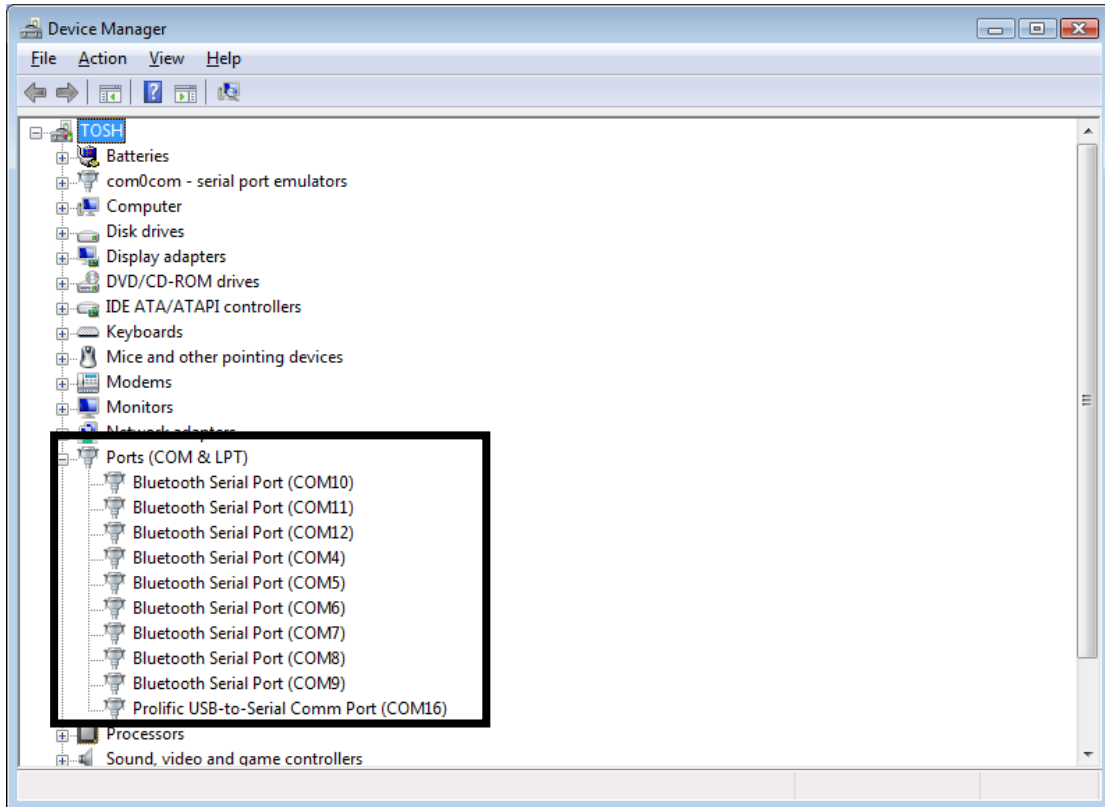


In the Control Panel search box (top right) type Device, and the link to the device manager will appear at the top of the list.

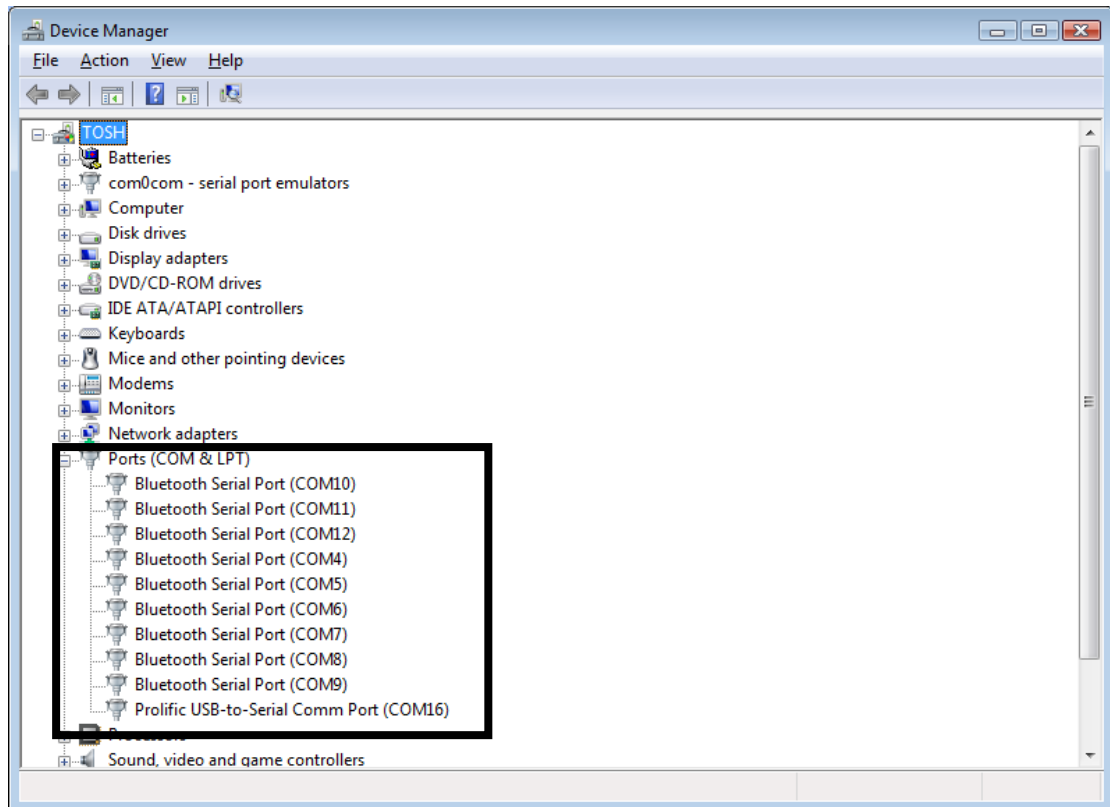
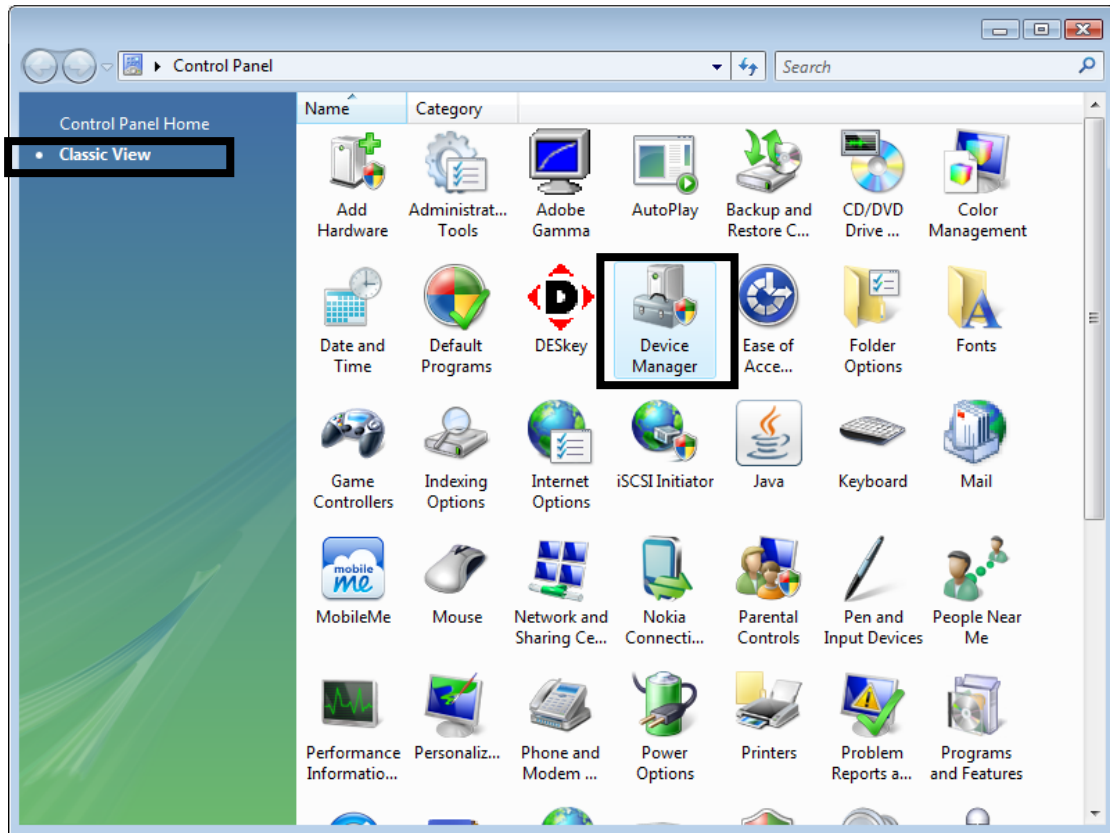


Windows 7

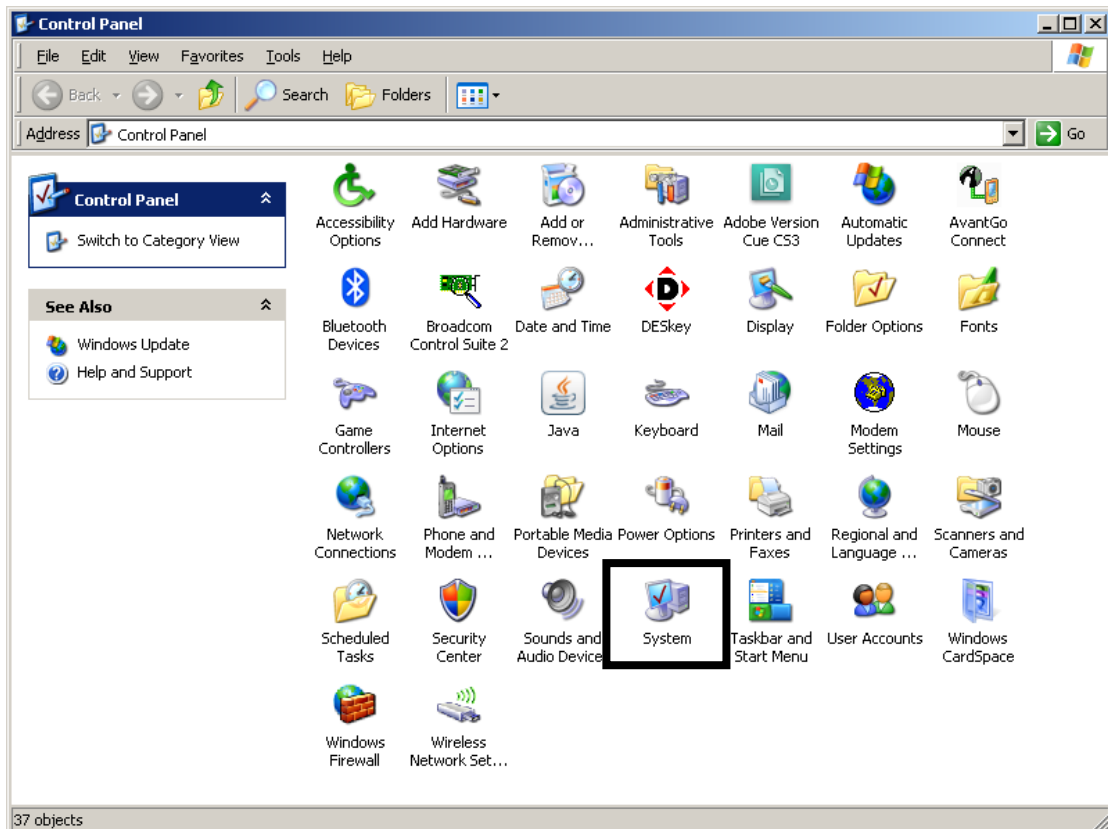
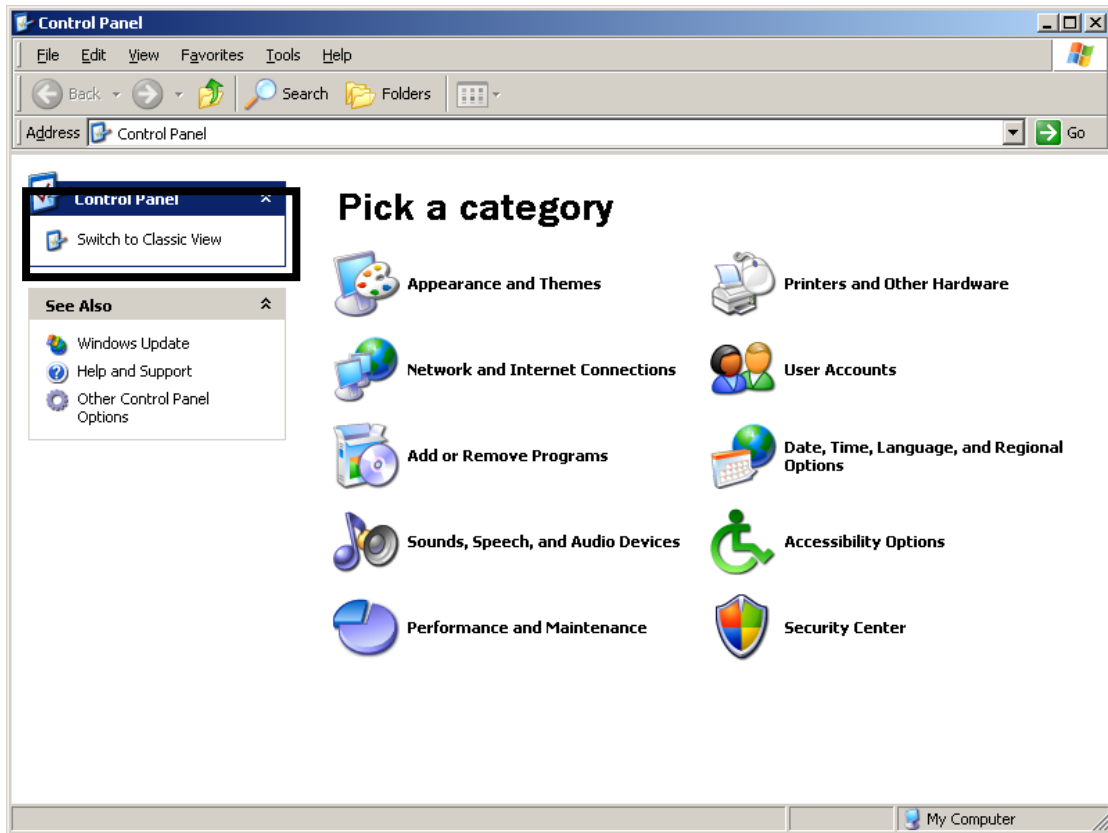


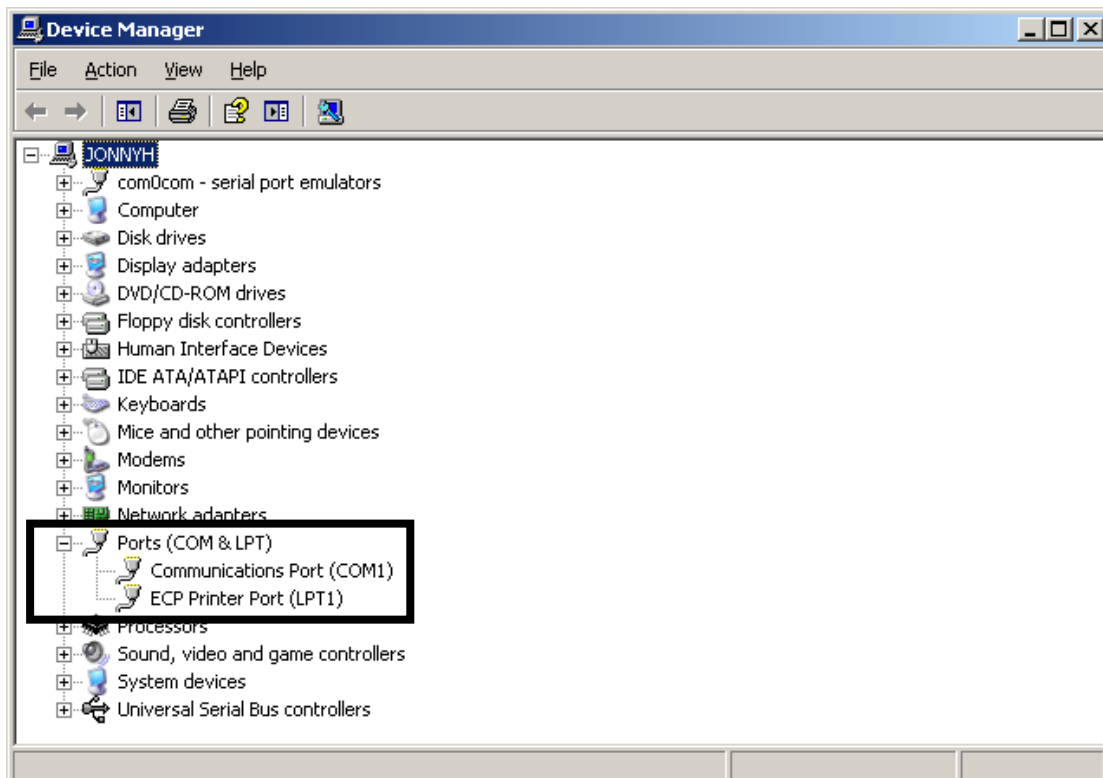
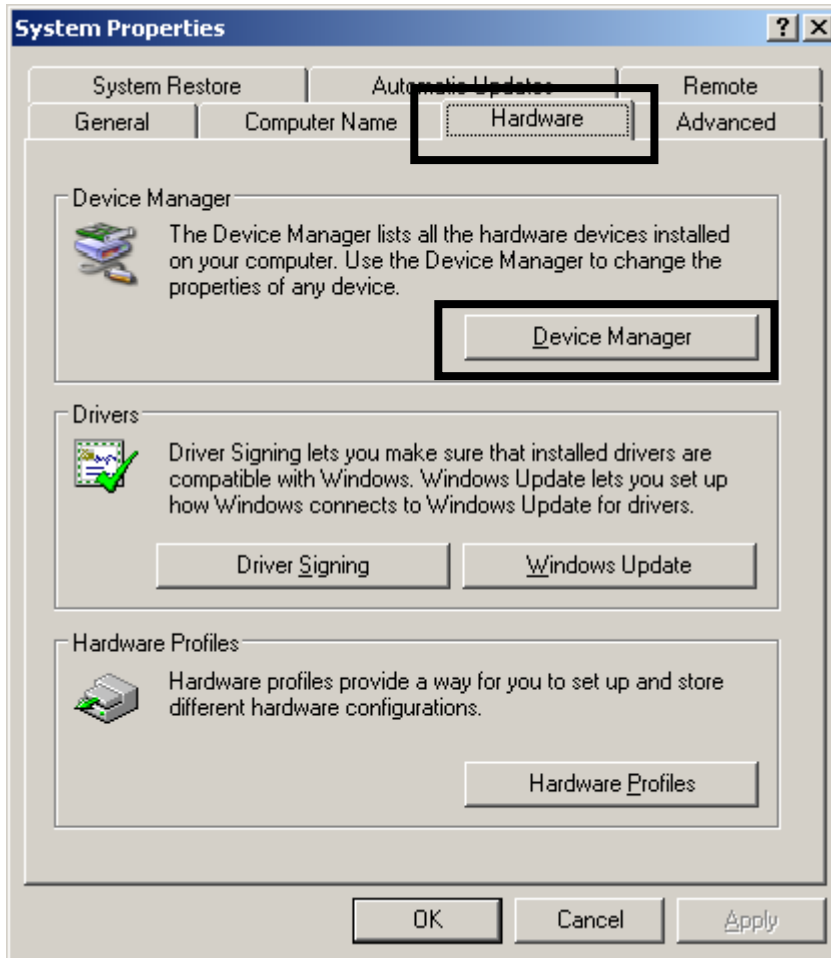


Windows Vista



Windows XP





Windows 98

Please note that InSite is no longer supported on Windows 98.

